

Pharmacy and respiratory department

Braltus® Zonda (tiotropium) inhaler

Information for patients

Introduction

This leaflet provides information about a new brand of tiotropium inhaler called Braltus®. If you have any questions about the information below please speak to your hospital doctor or pharmacist.

Braltus® Zonda Inhaler

The Respiratory department has switched from using Spiriva® Handihaler (tiotropium) to help control chronic obstructive pulmonary disease (COPD) to a similar inhaler called Braltus®. This product is just as effective and is more cost effective for use for the NHS.

Current inhaler being prescribed

Spiriva Handihaler (tiotropium)



New inhaler to be prescribed

BraltusZonda inhaler (tiotropium)



- The Braltus® Zonda inhaler contains tiotropium, which is **exactly the same** active ingredient in the same dose as your Spiriva® Handihaler.
- Although the labelled dose of the Spiriva® Handihaler is 18 micrograms, during inhalation, 10 micrograms of tiotropium is delivered from the mouthpiece. This is **exactly the same** delivered dose as from Braltus® Zonda inhaler. That means there is no change to your treatment or dose.
- You use the same inhaling technique.
- Unlike the Spiriva® inhaler, you will receive a brand new inhaler device with each refill of capsules.

As with all inhalers, it is important that you are able to use your new inhaler correctly to ensure you receive the correct dose of treatment. Ask your nurse, doctor or pharmacist to train and assess your inhaler technique before you start to use your Braltus® Zonda inhaler.

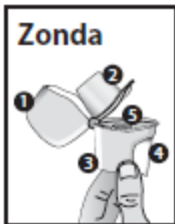
Zonda Instructions for Use

Dear Patient,

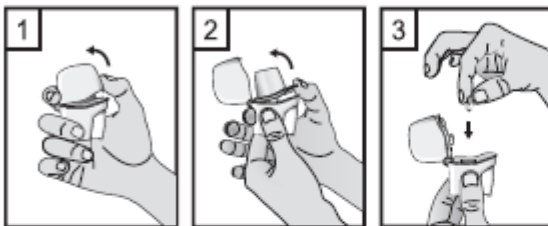
The Zonda inhaler enables you to inhale the medicine contained in the Braltus capsule that your doctor has prescribed for your breathing problems.

Remember to carefully follow your doctor's instructions for using Braltus. The Zonda inhaler is especially designed for Braltus capsules: you must not use it to take any other medication. The capsules must only be inhaled using the Zonda inhaler. Do **not** use any other inhalers to take Braltus capsules. Each capsule contains only a small amount of powder. Do **not** open the capsule or it may not work.

The Zonda inhaler should only be used with the bottle of capsules provided. Do not reuse the inhaler for another bottle of capsules. Discard the Zonda device after 15 uses (if used with a 15 capsule bottle) or 30 uses (if used with a 30 capsule bottle).

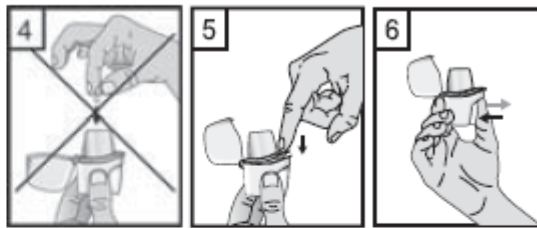


1. Dust cap
2. Mouthpiece
3. Base
4. Piercing button
5. Centre chamber

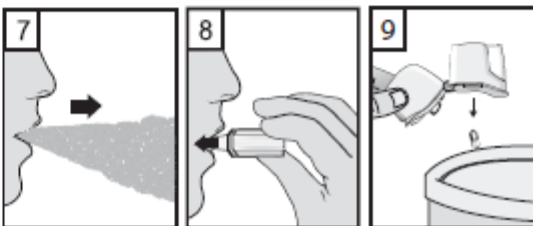


1. Pull the cap upwards.
2. Hold the base of the inhaler firmly and open the mouthpiece by pulling it upwards, in the direction of the arrow.
3. Remove a Braltus capsule from the bottle immediately before use and close the bottle tightly. Place one capsule in the capsule-shaped compartment in the base of the inhaler. Do **not** store the capsule in the Zonda inhaler.

4. **Never** place a capsule directly into the mouthpiece.



5. Close the mouthpiece until you hear a click, leaving the cap open.
6. Hold the inhaler with the mouthpiece upwards, and firmly press the piercing button completely in only once. Release the button. This will pierce the capsule and allows the medication to be released when you breathe in.



7. Breathe out fully. It is important to do this away from the mouthpiece. Avoid breathing into the mouthpiece at any time.
8. Place the mouthpiece in your mouth and keep your head in an upright position. Close your lips around the mouthpiece and breathe in slowly and deeply enough to hear or feel the capsule vibrating inside the compartment. Hold your breathe for as long as you comfortably can whilst taking the inhaler out of your mouth. Then breathe normally. Repeat steps 7 and 8 to empty the capsule completely.
9. After use, open the mouthpiece again, and tip out the empty capsule. Close the mouthpiece and cap, and store your Zonda inhaler.

The Zonda inhaler is a Medical Device (CE)

Manufacturer:

Plastiapi S.p.A.

Via 1 Maggio, 8, 23875 Osnago LC, Italy

21403-B

Additional Information

The information in this leaflet is not intended to replace your doctor's advice. If you require more information or have any questions, please contact the hospital medicine information department:

Medicines information
Pharmacy department
Call: 020 8846 1703
Monday-Friday, 09.00 – 17.00

Acknowledgments

This information leaflet is based on information from Teva who manufacture Braltus® Zonda <http://www.medicines.org.uk/emc/PIL.32621.latest.pdf>
It is also based on information provided by the Medicines Management Team for the North West London Clinical Commissioning Groups.

How do I make a comment about my visit?

We aim to provide the best possible service and staff will be happy to answer any of the questions you may have. If you have any **suggestions** or **comments** about your visit, please either speak to a member of staff or contact the patient advice and liaison service (**PALS**) on **020 3313 0088** (Charing Cross, Hammersmith and Queen Charlotte's & Chelsea hospitals), or **020 3312 7777** (St Mary's and Western Eye hospitals). You can also email PALS at pals@imperial.nhs.uk. The PALS team will listen to your concerns, suggestions or queries and is often able to help solve problems on your behalf.

Alternatively, you may wish to express your concerns in **writing** to:

Complaints department
Fourth floor
Salton House
St Mary's Hospital
Praed Street
London W2 1NY

Alternative formats

This leaflet can be provided on request in large print, as a sound recording, in Braille, or in alternative languages. Please contact the communications team on **020 3312 5592**.

Wi-fi

We have a free and premium wi-fi service at each of our five hospitals. For further information please visit our website: www.imperial.nhs.uk

Pharmacy and respiratory departments
Published: May 2017
Review date: May 2020
Reference no: 2794
© Imperial College Healthcare NHS Trust